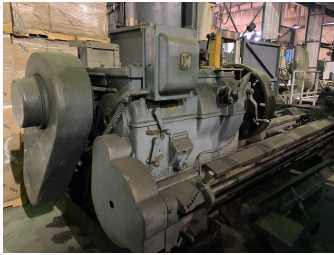


RR 861 LeBlond 36" x 187" Lathe



Details:

Description

RR 861 LeBlond 36" x 187" Lathe

S/N: NK 344

Year; 1939

2-1/4" Spindle

Lathes: RR 861 LeBlond 36" x 187" Lathe

33"- 36" Swing x 187" Centers

20 Hp Main Motor

31-1/2"- 4- Jaw Chuck

Taper Attachment

Misc Tooling

6' x 25' Floor Space Required x 65" Tall approx.

\$11,500.00

FOB: Ft Smith, AR

Price

Sales price without tax \$11,500.00

Contact Us:

River Road Machinery
2845 C River Road East
Van Buren, AR 72956
Phone: 479-461-1921
Fax: 479-452-2266